

# Functions

□ : Each unit ○ : Each group ● : Each block △ : Each floor ⊙ : Collective × : Not available

| Item                               | Description  | Operations | Display |
|------------------------------------|--|------------|---------|
| Controllable number of unit        | Up to 50 units/50 groups   |            |         |
| ON/OFF                             | ON and OFF operation for the air conditioning units and general equipment.<br>(To operate general equipment, PAC-YG6DCA is required.)  | ○ ○ △ ●    | ○ ○     |
| Operation mode                     | Switches between several operation modes depending on the air conditioning unit.<br>Air conditioning unit : Cool/Dry/Auto(*)/Fan/Heat<br>LOSSNAY unit : Heat Recovery/Bypass/Auto<br>CAHV, CRHV, Air To Water (PWFY) units : Heating, Heating ECO, Hot Water, Anti-freeze, Cooling(**)<br>* Auto mode is for CITY MULTI R2 and WR2 series only.<br>** Only PWFY                                    | ○ ○ △ ●    | ○       |
| Temperature setting                | Cool/Dry : 19°C (67°F) -35°C (95°F) [14°C (57°F) -30°C (87°F)]<br>Heat : 4.5°C (40°F) -28°C (83°F) [17°C (63°F) -28°C (83°F)]<br>Auto : 19°C (67°F) -28°C (83°F) [17°C (63°F) -28°C (83°F)]<br>The range of temperature depends on the air conditioning unit.<br>[ ] In case of using middle-temperature on PDFY, PEFY-VML/VMR/VMS/VMH-by setting DipSW7-1 to ON. Yet, PEFY-P-VMH-E-F is excluded. | ○ ○ △ ●    | ○       |
| Fan speed setting                  | Models with 4 air flow speed settings : Hi/Mid-2/Mid-1/Low<br>Models with 3 air flow speed settings : Hi/Mid/Low<br>Models with 2 air flow speed settings : Hi/Low<br>Fan speed setting (including Auto) varies depending on the model.  | ○ ○ △ ●    | ○       |
| Air flow direction setting         | Air flow direction angles, 4-angles or 5-angles Swing, Auto (Louver cannot be set)   | ○ ○ △ ●    | ○       |
| Schedule operation                 | Weekly schedule can be set by groups based on daily operation pattern.   | ○ ○ △ ●    | ○       |
| Permit/prohibit local operation    | Individually prohibits operation of each local remote controller function.<br>(ON/OFF, Operation mode, Set temperature, Filter sign reset, Air Direction*, Fan Speed*, Timer*)<br>* This function depends on the model.  | ○ ○ △ ●    | ○       |
| Indoor unit intake temperature     | Measures the intake temperature of the indoor unit only when the indoor unit is operating.   | ×          | ○       |
| Error                              | When an error is currently occurring on an air conditioning unit, the afflicted unit and the error code are displayed.   | ×          | □ ○     |
| Test run                           | This operates air conditioning units in test run mode.   | ○ ○ △ ●    | ○       |
| Ventilation interlock              | The ventilation unit (LOSSNAY) is able to automatically start its operation when operation of the interlocked indoor unit starts.  | ○ ○ △ ●    | ○       |
| External input/output              | By using optional external input/output adapter (PAC-YG10HA-E) you can set and monitor the following.<br>Input : By level signal : "Batch ON/OFF", "Batch emergency stop"<br>By pulse signal : "Batch ON/OFF", "Enable/disable local remote controller"<br>Output : "ON/OFF", "Error/Normal"   | ○          | ○       |
| Energy Management                  | Bar Graph : Indoor unit Electric Energy, FAN operation time, Thermo-ON time (TOTAL, Cooling, Heating) can be displayed hourly, daily and monthly.<br>Line Graph : Outdoor temp., Room temp., Set temp. (Heating, Cooling)<br>input from PAC-YG63MCA and temp. from AHC.  | ×          | □ ○ ●   |
| Advanced HVAC Controller (AHC)     | The status of AHC can only be monitored.   | ×          | ○       |
| New Smart ME controller            | The status of sensor on this controller can be monitored.  | ×          | ○       |
| Smartphone/Tablet                  | The specified Web browser on iOS and Android OS can monitor and operate AE-200E. *1  | ○          | ○       |
| New Web design                     | The web screen design is renewed for user friendly interface. *1   | ○ ○ △ ●    | ○       |
| Initial setting software           | The initial setting can be configured without the connection of AE-200E. *1  | ×          | ×       |
| Apportionment of power consumption | Apportionment of power consumption can be calculated on AE-200 without TG-2000A. *1  | ●          | □ ○ ●   |
| BACnet® communication              | ANSI/ASHRAE 135-2010 (ISO16484-5) is supported and approved by the BTL. *1   | ○          | ×       |

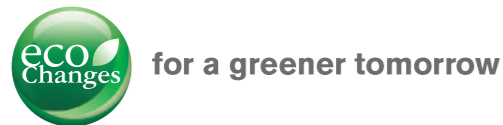
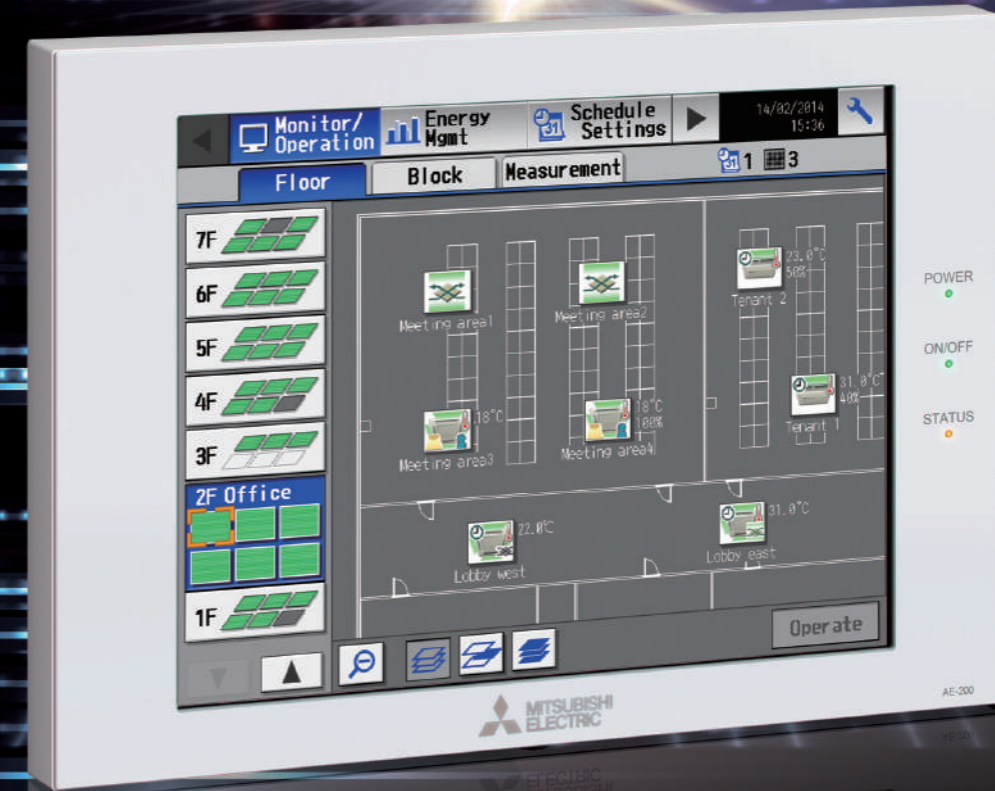
\*1. Please contact your local distributor for when the feature is supported.



Changes for the Better

## CENTRALIZED CONTROLLER

# AE-200E CITY MULTI



Eco Changes is the Mitsubishi Electric Group's environmental statement, and expresses the Group's stance on environmental management. Through a wide range of businesses, we are helping contribute to the realization of a sustainable society.



FM33568 / ISO 9001:2008

The Air Conditioning & Refrigeration Systems Works acquired ISO 9001 certification under Series 9000 of the International Standard Organization (ISO) based on a review of Quality management for the production of refrigeration and air conditioning equipment.

ISO Authorization System  
The ISO 9000 series is a plant authorization system relating to quality management as stipulated by the ISO. ISO 9001 certifies quality management based on the "design, development, production, installation and auxiliary services" for products built at an authorized plant.



The Air Conditioning & Refrigeration Systems Works acquired environmental management system standard ISO 14001 certification.

The ISO 14000 series is a set of standards applying to environmental protection set by the International Standard Organization (ISO). Registered on March 10, 1998.

### Warning

- Do not use refrigerant other than the type indicated in the manuals provided with the unit and on the nameplate.
  - Doing so may cause the unit or pipes to burst, or result in explosion or fire during use, during repair, or at the time of disposal of the unit.
  - It may also be in violation of applicable laws.
- MITSUBISHI ELECTRIC CORPORATION cannot be held responsible for malfunctions or accidents resulting from the use of the wrong type of refrigerant.

MITSUBISHI ELECTRIC CORPORATION

<http://Global.MitsubishiElectric.com>

for a greener tomorrow



# AE-200E - Visualizing control

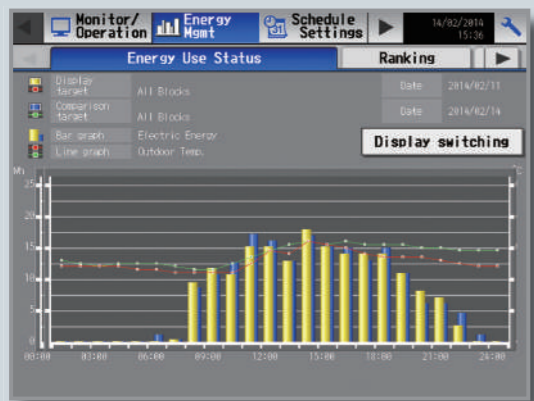
## Features of New Centralized Controller "AE-200E"

- 1 By comprehensively showing the energy consumption of air-conditioning equipment, it provides assistance in energy saving.**
  - Energy consumption of air-conditioning equipment by individual area is displayed using graphs for easier viewing.
  - Enables comparisons with the previous year's power consumption as well as with the target electric power, thus allowing users to check the operating state at a glance.
  - Floor layout is displayed on the 10.4-inch LCD touch panel, facilitating easier operation of air-conditioning equipment.
- 2 In an easy and flexible manner, an optimum system can be established according to the scale of facilities.**
  - Implements control on up to 50 indoor units of air-conditioning equipment.
  - By using three units of expansion controller "AE-50E", the centralized control is implemented for the maximum of 200 indoor units.
  - Connection with PC allows implementation of control on more than 200 indoor units via Web browser.\*1

\*1. Please contact your local distributor for when the feature is supported.
- 3 Features for operating and monitoring the hot water heat pump are also available on CAHV, PWFY, and CRHV.\*2**
  - Centralized batch control on CAHV, PWFY, and CRHV\*2 is possible in addition to that on air-conditioning unit.

\*2. Please contact your local distributor for when these features are supported on CRHV.

## Control Screen for Power Consumption



Energy consumption of applicable area is displayed by the month, day, and hour. Energy consumption of two different units, groups and blocks can be compared. Fan operation time as well as energy consumption can be displayed.



Energy consumptions of air-conditioning equipment are ranked and displayed by individual air-conditioning equipment and by area, thus visualizing high-load components. Also, comparison of energy consumption with target electric energy is possible.

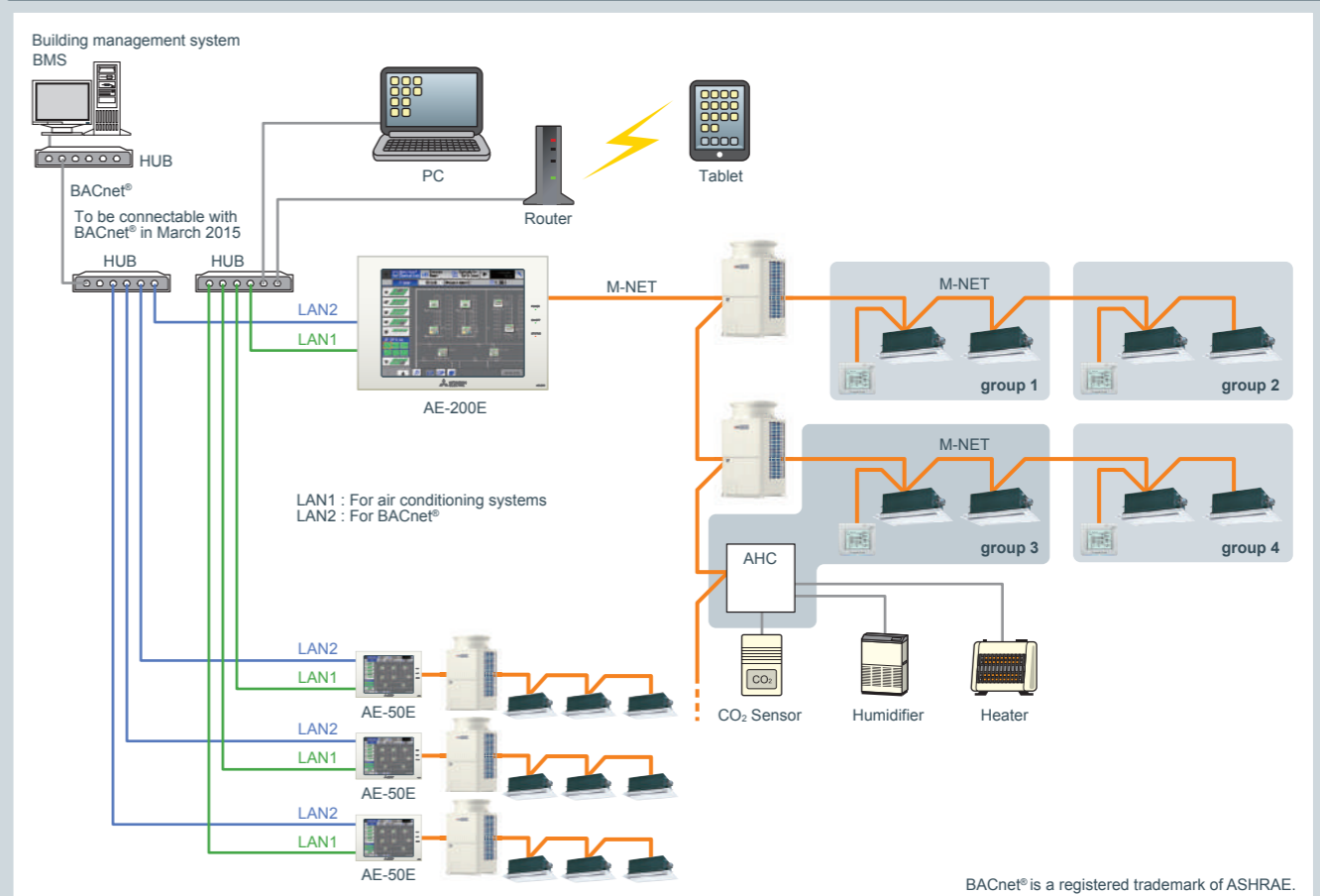
## Feature Comparison with Current Model

|   |   | New controller AE-200E | Current controller AG-150A |
|---|---|------------------------|----------------------------|
| Operation and configuration of air-conditioning equipment | Maximum number of units for control (indoor unit)           | 200 units*1            | 150 units*2                |
|   | Control on more than 200 indoor units via Web               | ○*6                    | △*3                        |
|   | LCD screen size   | 10.4-inch              | 9-inch                     |
| Energy control  | Apportionment of electric power by main unit                | ○*6                    | △*4                        |
|   | Storing of operation data by main unit (for 2 years)        | ○                      | -                          |
|   | Graphing of energy consumption                              | ○                      | -                          |
| Web   | Operation using smartphones and tablets                     | ○*6                    | -                          |
| Others  | BACnet® communication                                       | ○*6                    | -                          |
|   | Capturing of pulse signals from watt-hour meter             | ○*6                    | -                          |
|   | Demand control (peak-cut control)                           | ○                      | ○                          |
|   | Built in main unit power supply (support for 100 to 240VAC) | ○                      | -                          |
| Connection with hot water heat pump (CAHV/PWFY/CRHV*6)    |   | ○                      | △*5                        |

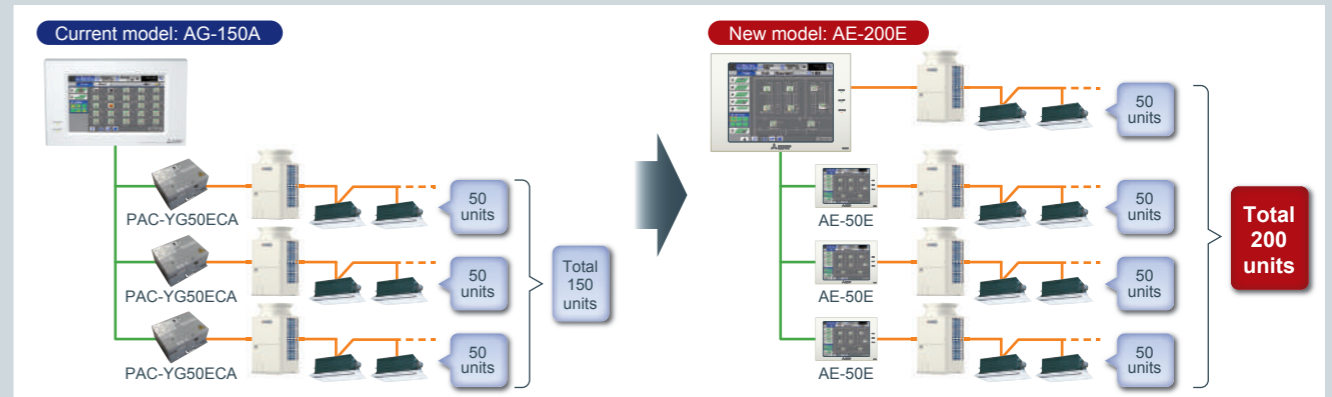
- \*1. When three AE-50E units are connected.
- \*2. When three PAC-YG50ECA units are connected.
- \*3. Special-purpose integrated control software "TG-2000A" is required separately.
- \*4. TG-2000A is required.
- \*5. CAHV/PWFY is supported.
- \*6. Please contact your local distributor for when the feature is supported.

BACnet® is a registered trademark of ASHRAE.

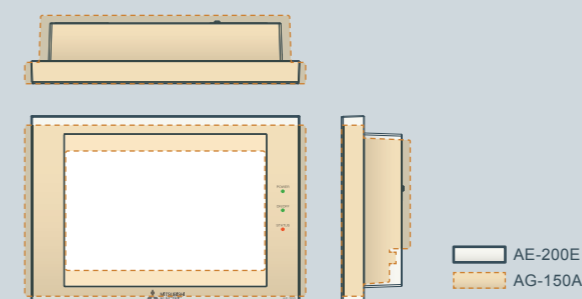
## System Structure



## Comparison in the number of connectable units



## Comparison of Dimensions (AE-200E/AG-150A)



## External Dimensions

